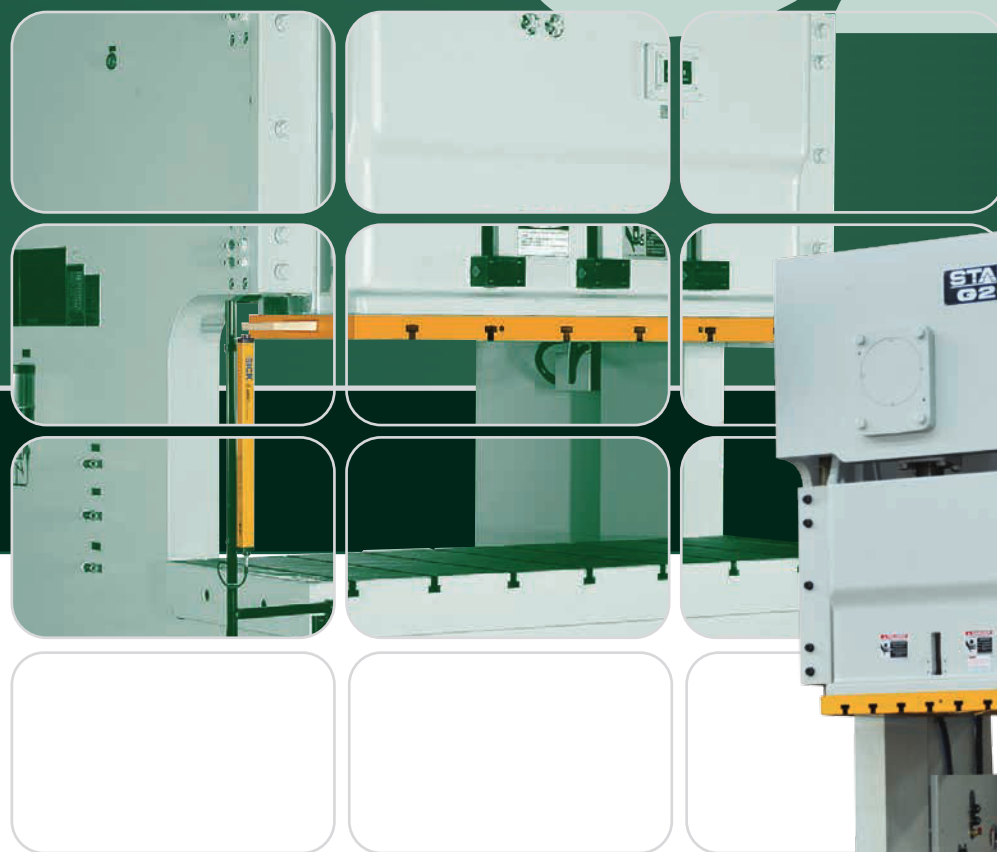


## C-Frame Double Crank Power Presses

# G2



121 . 176 . 220 . 275 . 330 tons

# G2

## C-Frame Double Crank Power Presses

The Stamtec G2 series two point gap frame press (aka OBG, OBS, OBI, or c-frame) was designed for stamping relatively long, narrow parts at high single stroking rates or in continuous mode, using either blanks or coil stock; or running progressive dies that need the longer bed area to accommodate long dies with multiple stations. The slide is guided by six (6)-point full-length box type gibs, providing excellent control of slide alignment and accuracy throughout the entire stroke.

The G2 series provides a large die area at a very economical price, especially in applications where it can be used effectively instead of a straight side press.



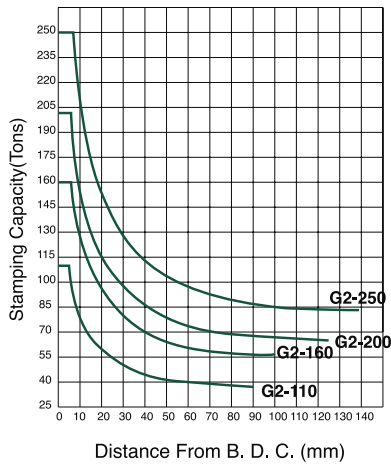
### STANDARD FEATURES

- Wet type clutch and brake
- Hydraulic overload system
- Super rigid, low deflection steel frame
- Large window
- Cast slide, with removable, t-slotted slide plate
- Motorized slide adjustment
- Wide, box-type centered gibs
- Air counterbalance system
- T-slotted bolster
- Flywheel brake
- Automatic lubrication system
- Digital die height indicator
- Overrun detector (brake monitor)
- Motorized grease pump
- Dual air safety valve
- Floor standing electric control cabinet
- Press control with:
  - » Six (6) programmable limit switches
  - » Four (4) programmable die motor inputs
  - » 6-digit part & batch counters
  - » LCD display screen for status and fault messages
  - » LED display for crank angle and spm
  - » Interlocked die safety block
- HMI operation panel
  - » Electronic crank angle LED display
  - » Electronic S.P.M. LED display
  - » LCD type press status monitor
- Operation mode selection
  - » Off / inching / safety one stroke / continuous
- Total counter, 6 digits
- Preset counter, 6 digits
- Maintenance counter, 4 digits
- Life counter, 10 digits
- Electronic rotary cam (6 spare channels)
- Air ejector, 3/8", one channel
- Air source receptacle, 3/8", two channel
- Misfeed detection circuit
- Power receptacle (available only for single phase, 110V power source wiring by user)
- Flywheel safety guard
- Eddy current drive VS motor
- Main motor reversing circuit
- Portable 2-hand pushbutton t-stand
- Inverter & main motor reversing circuit

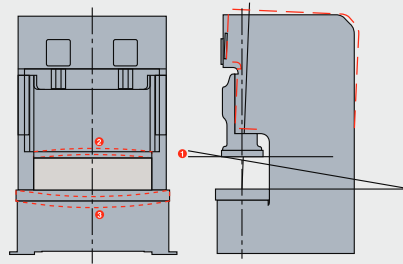
### OPTIONAL FEATURES

- Link motion drive technology
- Press controls from industry leaders such as Wintriss, Link, Helm (Allen-Bradley), Toledo (Allen-Bradley) Siemens, Mitsubishi, etc.
- Anti-vibration press leveling mounts
- Safety light curtains
- Tonnage monitor
- Die cushion
- Knockout bar
- Feeding and coil handling systems
- Flywheel brake
- Die space light
- Anchor bolts & foundation plates
- VFD-variable frequency drive
- Quick die change system (page 4)
  - » Upper die clamp
  - » Lower die clamp
  - » Die lifter
  - » Die arm

### Stroke-Capacity Diagram ( S ) ( V )



### Produce High Quality Stampings with Low Deflection, Ultra-Rigid Steel Frame

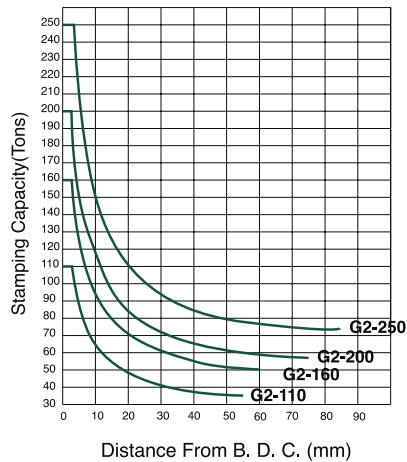


The Stamtec G2 Series is designed to resist deflection, and to provide accurate pressings and longer die life, even at full tonnage loads. The heavy, one-piece welded steel frame is fully stress relieved to provide a stable base for the G2 Series presses.

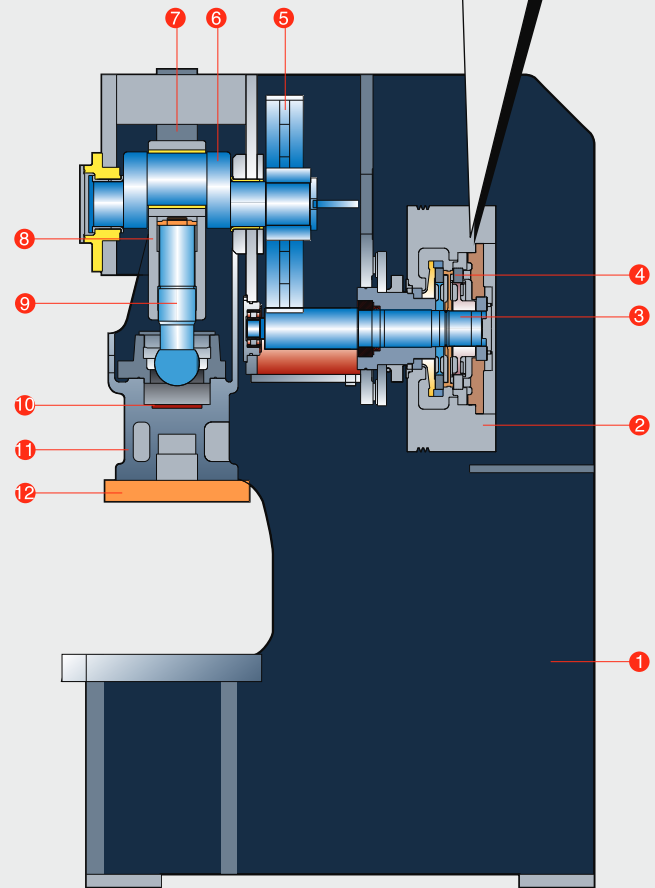
### Get High Performance with Low Maintenance, Long-Life Wet Clutch and Brake

The Stamtec clutch delivers high torque at relatively low air pressure, and with a low moment of inertia. Modern, suited clutch and brake friction linings combine high performance with low vibration and noise. The linings run in an enclosed oil bath, providing very efficient heat dissipation. Together, these superior features add up to a high performance, efficient, long-lived clutch, with reduced lining wear and air consumption, even at high single-stroke rates of production.

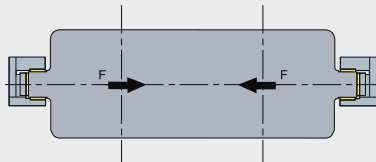
### Stroke-Capacity Diagram ( H )



1. Frame
2. Flywheel
3. Pinion Shaft
4. Wet Type Clutch & Brake
5. Main Gear
6. Crank Shaft
7. Counter Balance
8. Connecting Rod
9. Adjusting Screw
10. Chamber of H.O.L.P.
11. Slide
12. Slide Plate (detachable)
13. Bolster

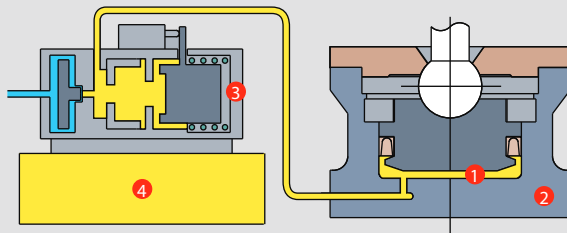


### Assure Accurate Vertical Force with Centered Box-Type Gibbing



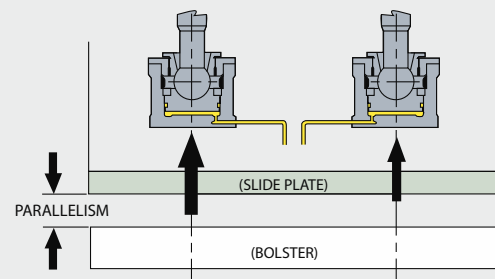
One-piece, full-length, box-type centered gibs assure actuated slide guiding, and provides better control of slide alignment than rear-mounted gibs. Force is delivered vertically, minimizing lateral thrust and, consequently reducing off-center loading and friction in the gibs. Clearance settings (front to back and left to right) are accomplished by push-pull types screws, and maintained to factory tolerances by the use of laminated spacers.

### Protect Press and Dies with Fast Response HOLP



Stamtec's fast response Hydraulic Overload Protection (HOLP) system relieves the pressure of a tonnage overload in milliseconds and simultaneously issues an emergency stop signal to the press control, protecting the press and tooling from catastrophic damage. The HOLP system automatically re-pressurizes when the slide is inched back to top of stroke. The HOLP system can also be relieved manually to assist in un-sticking a die which is stuck on bottom of stroke.

### Maintain Parallelism During Off Center Loads

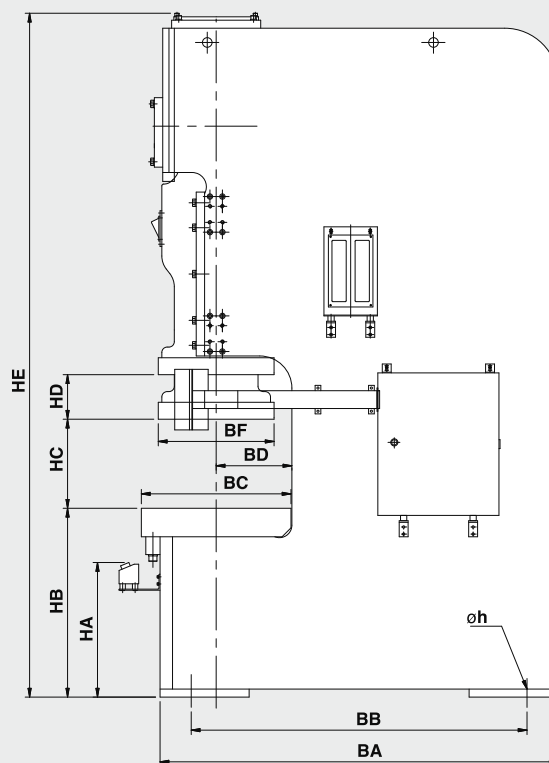
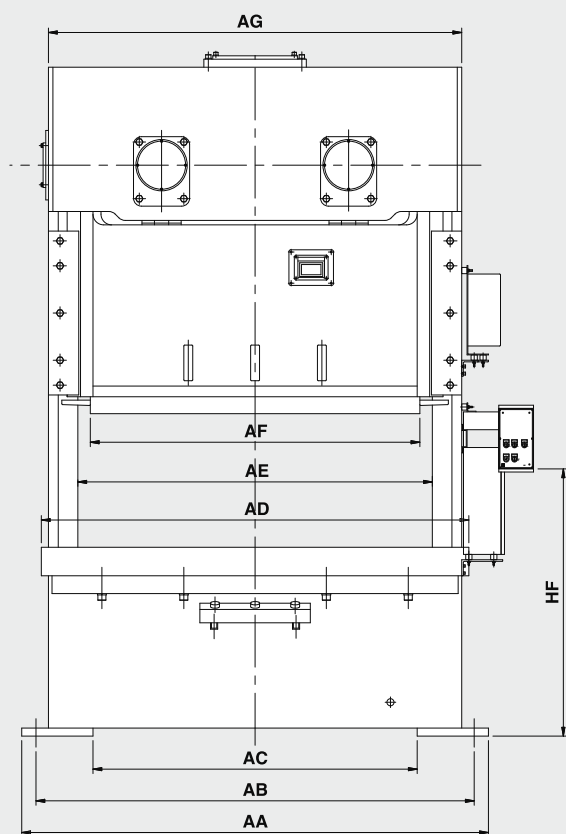


If unequal loads are applied across the slide, full oil pressure from the overload system is applied where required to retain the parallelism between slide plate and bolster for consistent quality of stampings and extended tooling life.

SPECIFICATIONS

MODEL		G2-100		G2-160		G2-200		G2-250		G2-300	
Type		V	H	V	H	V	H	V	H	V	H
Capacity	US Tons	121		176		220		275		330	
	Metric Tons	110		160		200		250		300	
Rated tonnage point (above B.D.C.)	in.	0.196	0.118	0.236	0.118	0.236	0.118	0.275	0.118	0.28	0.138
	mm	5	3	6	3	6	3	7	3	7	4
Stroke length	in.	7.08	4.33	7.87	5.11	9.84	5.9	11.02	5.9	11.02	6.69
	mm	180	110	200	130	250	150	280	170	280	170
Speed	SPM	30 ~ 50	50 ~ 100	30 ~ 55	40 ~ 85	25 ~ 45	35 ~ 70	20 ~ 35	35 ~ 70	20 ~ 35	30 ~ 60
Die height (S.D.A.U.)	in.	15.75	13.77	17.7	15.75	19.68	17.72	21.65	17.72	21.65	21.65
	mm	400	350	450	400	500	450	550	450	550	550
Maximum upper die Weight	lbs.	1763.69		2799.86		3240.79		3439.20		TBD	
	kg	800		1270		1470		1560			
Slide adjustment	in.	3.93		3.93		4.72		4.72		4.72	
	mm	100		100		120		120		120	
Bolster area (L. R. X F. B.)	in.	70.86 x 25.59		78.73 x 29.92		94.48 x 33.07		106.29 x 35.43		106.30 x 35.43	
	mm	1800 x 650		2000 x 760		2400 x 840		2700 x 900		2700 x 900	
Bolster thickness	in.	5.11		5.9		6.29		6.26		7.48	
	mm	130		150		160		160		190	
Slide plate area (L. R. X F. B.)	in.	55.11 x 19.68		62.99 x 21.65		72.83 x 25.59		82.67 x 27.55		94.01 x 31.50	
	mm	1400 x 500		1600 x 550		1850 x 650		2100 x 700		2388 x 800	
Slide plate thickness	in.	2.75		2.75		3.74		3.74		3.74	
	mm	70		70		95		95		95	
Shank hole	in.	Ø1.96 x .11 Pitch 12.59		Ø1.96 x .11 Pitch 13.77		Ø1.96 x .11 Pitch 14.76		Ø1.96 x .11 Pitch 17.71		TBD	
	mm	Ø50 x 3 Pitch 320		Ø50 x 3 Pitch 350		Ø50 x 3 Pitch 375		Ø50 x 3 Pitch 450			
Main Motor: Equipped with variable frequency drive	HP x P	15 x 4		20 x 4		20 x 6		25 x 6		30 x 6	
	KW x P					15 x 6		19 x 6		22 x 6	
Slide adjusting motor	HP x P	1 x 4		1 x 4		2 x 4		2 x 4		2 x 4	
	KW x P	0.75 x 4		0.75 x 4		1.5 x 4		1.5 x 4		1.5 x 4	
Air pressure required	PSI	71.12		71.12		71.12		71.12		71.12	
	kPa	5		5		5		5		5	
Standard voltage is 480. Other voltages available at additional cost.											
Parallelism: Slide to Bolster - 0.001” per foot or less.											

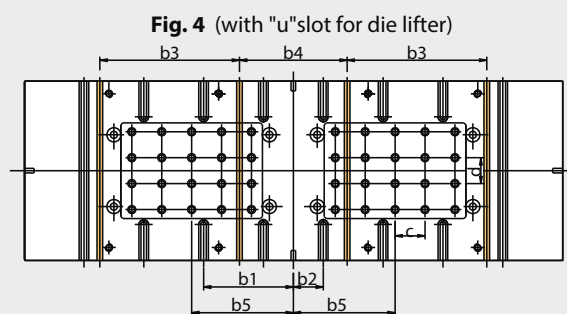
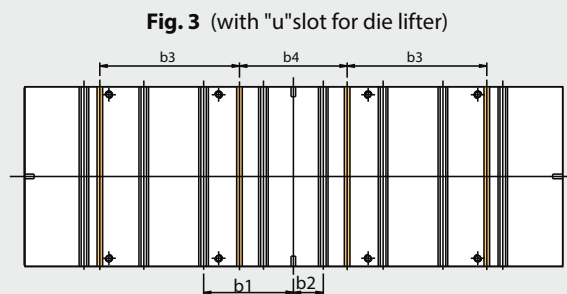
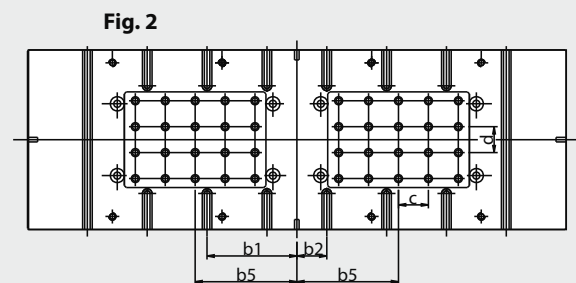
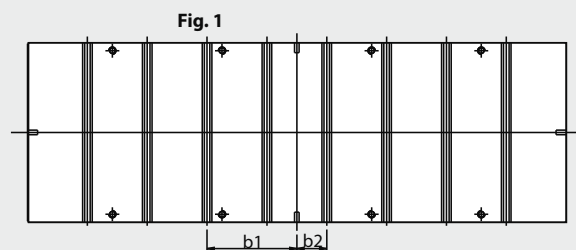
DIE CUSHION		2 - PAD / 2 - CYLINDER				
MODEL		G2-100	G2-160	G2-200	G2-250	G2-300
Capacity	lbs.	7936.64 x 4409.24	13889.12 x 4409.24	22046.23 x 4409.24	30864.72 x 4409.24	Available on request
	kg	3.6 x 2	6.3 x 2	10 x 2	14 x 2	
Air pressure	PSI	92.45	102.41	96	128.01	Available on request
	kPa	6.5	7.2	6.75	9	
Stroke length	in.	2.755	2.755	3.14	3.14	Available on request
	mm	70	70	80	100	
Pad area	in.	13.77 x 9.25 x 2pcs	16.14 x 10.23 x 2pcs	21.25 x 13.77 x 2pcs	25.19 x 18.50 x 2pcs	Available on request
	mm	350 x 235 x 2pcs	410 x 260 x 2pcs	504 x 350 x 2pcs	640 x 470 x 2pcs	



unit: mm

MODEL	G2-110			G2-160			G2-200			G2-250		
TYPE	S	V	H	S	V	H	S	V	H	S	V	H
AA	2000 mm / 78.74 in			2200 mm / 86.61 in			2620 mm / 103.15 in			3000 mm / 118.10 in		
AB	1900 mm / 74.80 in			2080 mm / 81.89 in			2460 mm / 96.85 in			2800 mm / 110.23 in		
AC	1360 mm / 53.54 in			1520 mm / 59.84 in			1820 mm / 71.65 in			2200 mm / 86.61 in		
AD	1800 mm / 70.87 in			2000 mm / 78.74 in			2400 mm / 94.48 in			2700 mm / 106.29 in		
AE	1510 mm / 59.44 in			1660 mm / 65.35 in			1990 mm / 78.34 in			2230 mm / 87.79 in		
AF	1400 mm / 55.11 in			1600 mm / 62.99 in			1850 mm / 72.83 in			2100 mm / 82.67 in		
AG	1780 mm / 70.07 in			1980 mm / 77.95 in			2320 mm / 91.33 in			2590 mm / 101.96 in		
BA	1745 mm / 68.70 in			1940 mm / 76.37 in			2235 mm / 87.99 in			2545 mm / 100.19 in		
BB	1295 mm / 50.98 in			1380 mm / 54.33 in			1885 mm / 74.21 in			2195 mm / 86.41 in		
BC	650 mm / 25.59 in			760 mm / 29.92 in			840 mm / 33.07 in			900 mm / 35.43 in		
BD	330 mm / 12.99 in			385 mm / 15.15 in			425 mm / 16.73 in			455 mm / 17.91 in		
BE	500 mm / 19.68 in			550 mm / 21.65 in			650 mm / 25.59 in			700 mm / 27.55 in		
HA	(595 mm) / (23.42 in)			(695 mm) / (27.36 in)			(755 mm) / (29.72 in)			(785 mm) / (30.90 in)		
HB	830 mm / 32.67 in	865 mm / 34.05 in		990 mm / 38.97 in	1025 mm / 40.35 in		1060 mm / 41.73 in	1110 mm / 43.70 in		1090 mm / 42.91 in	1145 mm / 45.07 in	
HC	400 mm / 15.74 in			450 mm / 17.71 in			500 mm / 19.68 in			550 mm / 21.65 in		
HD	180 mm / 7.08 in	110 mm / 4.33 in		200 mm / 7.87 in	130 mm / 5.11 in		250 mm / 9.84 in	150 mm / 5.90 in		280 mm / 11.02 in	170 mm / 6.69 in	
HE	3059 mm / 120.43 in			3709 mm / 146.02 in			3839 mm / 151.14 in			4294 mm / 169.05 in		
HF	1170 mm / 46.06 in			1370 mm / 53.93 in			1500 mm / 59.05 in			1610 mm / 63.38 in		
ØF	Ø35 mm / 1.38 in			Ø47 mm / 1.85 in			Ø54 mm / 2.12 in			Ø54 mm / 2.12 in		

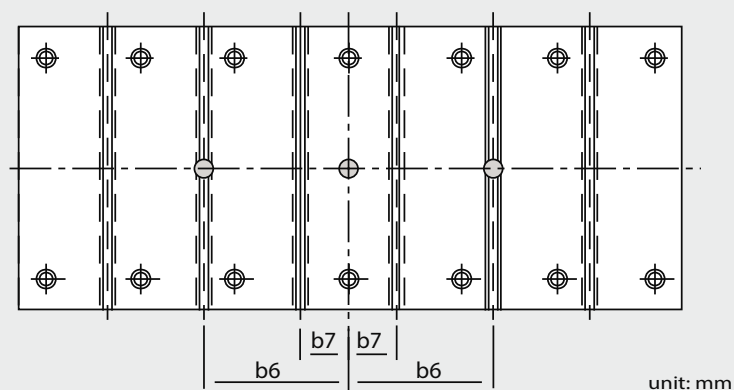
## BOLSTER AND SLIDE PLATE DIMENSIONS



unit: mm

MODEL	G2-110	G2-160	G2-200	G2-250
Bolster Area (LR x FB)	1800 x 650 mm / 70.86 x 25.59 in	2000 x 760 mm / 78.74 x 29.92 in	2400 x 800 mm / 94.48 x 33.07 in	2700 x 900 mm / 106.29 x 35.43 in
Type of T-Slot	A	A	A	A
No. of T-Slot	6	8	8	8
b1	375 mm / 14.76 in	375 mm / 14.76 in	375 mm / 14.76 in	450 mm / 17.72 in
b2	125 mm / 4.92 in	125 mm / 4.92 in	125 mm / 4.92 in	150 mm / 5.91 in
b3	320 mm / 12.6 in	520 mm / 20.47 in	710 mm / 27.96 in	680 mm / 26.77 in
b4	430 mm / 16.93 in	520 mm / 20.47 in	520 mm / 20.47 in	540 mm / 21.26 in
b5	255 mm / 10.04 in	415 mm / 16.34 in	455 mm / 17.91 in	510 mm / 20.08 in
<b>Fig 2. Fig 4</b>	No. of Pin Hole x Dia.	30 x 20 mm / 1.81 x 0.79	48 x 20 mm / 1.89 x 0.79 in	48 x 28 mm / 1.89 x 0.79 in
	C x D	75 x 100 mm / 2.95 x 3.94 in	75 x 75 mm / 2.95 x 2.95 in	100 x 100 mm / 3.94 x 3.94 in

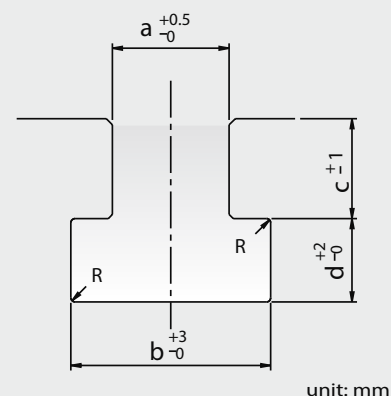
### SLIDE PLATE



unit: mm

MODEL	G2-110	G2-160	G2-200	G2-250
Slide Plate Area (LR x FB)	1400 x 500 mm / 55.12 x 19.68 in	1600 x 550 mm / 62.99 x 21.65 in	1850 x 650 mm / 72.83 x 25.59 in	2100 x 700 mm / 82.67 x 27.56 in
Type of T-Slot	A	A	B	B
No. of T-Slot	4	6	6	6
b6	375 mm / 14.76 in	375 mm / 14.76 in	375 mm / 14.76 in	450 mm / 17.72 in
b7	125 mm / 4.92 in	125 mm / 4.92 in	125 mm / 4.92 in	150 mm / 5.91 in

### T-Slot Detail



unit: mm

Dim.	Type	A	B
a		22 mm / 0.87 in	28 mm / 1.10 in
b		37 mm / 1.46	48 mm / 1.89 in
c		24 mm / 0.98 in	28 mm / 1.10 in
d		16 mm / 0.63 in	20 mm / 0.79 in
r		1 mm / 0.04 in	1 mm / 0.04 in

# OmniLink System

## 5100-MPC Press Controls

Link's custom engineered OmniLink System 5100-MPC part revolution mechanical power press controls provide unmatched features and flexibility to achieve the ultimate in pressroom productivity and safety at modest cost.

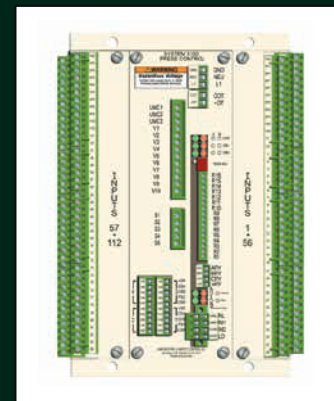
OmniLink 805 Operator Terminal: The user friendly OmniLink 805 Operator Terminal uses a Color 5.7"LCD TFT with 640 x 480 pixel resolution and touch screen.

OmniLink System 5100-MPC Press Controls are designed to meet all functional safety requirements of current and anticipated OSHA 29 CFR 1910.217, ANSI B11.1, and CSA Z142 standards, and to provide safety features in addition to these standards when properly applied, adjusted, installed and used.



### STANDARD FEATURES

- **Stopping Time Performance (Brake) Monitor**
- **Motion Detection**
- **Clutch Engagement Time Monitor**
- **Counters:** Four counters are standard.
- **Die Protection:** Four Die Protection/Process Monitoring inputs standard.
- **Job Storage and Recall:** Parameters for up to 100 jobs can be stored.
- **Diagnostics:** The intelligent diagnostics of the OmniLink System 5100-MPC control are displayed in English or Spanish.
- **Stroking Modes:** Off, Inch, Automatic Timed Inch, Setup/Stop Time Test, Single Stroke (Cycle), and Continuous are standard, Automatic Single Stroke (Cycle), Maintained Continuous, and Continuous on Demand are optional.
- **Event Log:** Displays the date, time and reason for the last 256 stops.
- **Displays:** All system information in either English or Spanish.
- **Automatic Top Stop Compensation:** Automatically compensates top stop for speed to stop variable speed presses at top of stroke over the entire speed range.



### OPTIONAL FEATURES

- **PLS Outputs:** Either four or eight optional programmable limit switch outputs are available to sequence and time automation with the stroking of the press.
- **Analog Speed Control/Load Option**
- **Tonnage Monitor:** 2 or 4 channel peak forward and reverse.
- **LinkNet:** The optional LinkNet information system allows presses equipped with the OmniLink System 5100 control to be connected with a computer equipped with Link's LinkNet software via a serial communications network.
- **Optional AD1 Angle/Speed Displays:** These displays provide a large graphical circular crankshaft position indicator and digital display of angle or stroking speed for visibility at a distance.
- **Communication Card:** For serial feed interface and/or LinkNet.
- **Safety Relay Modules:** Up to four safety relay outputs. These relays can be used to give automation used with the press production system control reliable stop signals when an emergency stop, light curtain or other protective input stop signal occurs.





# STAMTEC®

METAL STAMPING & FORMING EQUIPMENT

Stamtec has been providing dependable, affordably priced metal stamping presses for almost 30 years in the North American market, and 60 years worldwide through our parent company Chin Fong. Our 72,000 sq. ft. sales, service, logistics, and assembly facility in Tennessee is home not only to North America's largest inventory of new presses and spare parts, but also our most important asset - our people. Our staff of engineering, sales, service, and support personnel are here to serve you in the most timely and professional manner. So, tap into our global strength, and grow with us as we grow with you!



## GAP FRAME PRESSES

1-POINT AND 2-POINT



## STRAIGHT SIDE PRESSES

1-POINT, 2-POINT AND 4-POINT



## SERVO PRESSES

1-POINT AND 2-POINT  
GAP AND STRAIGHT SIDE



## FORGING PRESSES

WARM / HOT AND COLD



## COIL FEEDING & HANDLING SYSTEMS

# STAMTEC®

METAL STAMPING & FORMING EQUIPMENT

**U.S.A. - STAMTEC, INC.**

4160 Hillsboro Highway • Manchester, TN 37355 U.S.A.

TEL: +1-931-393-5050 • FAX: +1-931-393-5060

sales@stamtec.com

**www.stamtec.com**



**www.STAMTEC.com**